

# "AH! MAY THE RED ROSE LIVE ALWAYS!"

by Stephen Foster

---

In three arrangements:

1. high voice with piano (original setting)
2. high voice with guitar
3. high voice with guitar and obbligato instrument (flute, clarinet, violin, or recorder)

---

Copyright William F. Long, 2009

# "AH! MAY THE RED ROSE LIVE ALWAYS!"

Stephen C. Foster

*Not too fast*

PIANO

*Fine* *G* *Emin* *C*

Ah! may the red rose live al - way, To  
Long may the dai - sies dance the field,  
Lulled be the dirge in the cy - press bough, That

*Fine*

*G/B* *D7/A* *G* *D7* *G* *Emin* *Amin/C*

smile up - on earth and sky! Why should the beau - ti - ful e - ver weep?  
Fro - lick - ing far and near! Why should the in - no - cent hide their heads!  
tells of de - part - ed flowers! Ah! that the but - ter - fly's gild - ed wing

*G/D* *D7* *G* *D* *G/D*

Why should the beau - ti - ful die? Lend - ing a charm to ev - 'ry ray That  
Why should the in - no - cent fear? Spread - ing their pe - tals in mute de - light When  
flut - tered in e - ver - green bowers! Sad is my heart for the blight - ed plants Its

"Ah! May the Red Rose Live Away!" -2-

19 D A A7 D G

falls on her cheeks of light, Gi - ving - the ze - phyr kiss for kiss, And  
morn in its ra - diance breaks, Keep - ing a flo - ral fes - ti - val Till the  
19 plea - sures are aye as brief They bloom at the young year's joy - ful call, And

23 A7 *ad. lib.* D G Emin C

nur - sing the dew - drop bright. Ah! may the red rose live al - way, To  
night lov - ing prim - rose wakes. Long may the dai - sies dance the field, To  
23 fade with the au - tumn leaf: Lulled be the dirge in the cy - press bough, That

27 G/B D7/A G D7 G Emin Amin/C

smile up - on earth and sky! Why should the beau - ti - ful e - ver weep?  
Fro - lick - ing far and near! Why should the in - no - cent hide their heads!  
27 tells of de - part - ed flowers! Ah! that the but - ter - fly's gild - ed wing

31 G/D D7 G

Why should the beau - ti - ful die?  
Why should the in - no - cent fear?  
31 flut - tered in e - ver - green bowers!

# "AH! MAY THE RED ROSE LIVE ALWAYS!"

guitar accompaniment  
by W. F. Long

Stephen C. Foster

*Not too fast*

GUITAR

*5th pos.*

*Fine*

Ah! may the red rose live al - way, To smile up - on earth and sky!  
Long may the dai - sies dance the field, Fro - lick - ing far and near!  
Lulled be the dirge in the cy - press bough, That tells of de - part - ed flowers!

Why should the beau - ti - ful e - ver weep? Why should the beau - ti - ful die?  
Why should the in - no - cent hide their heads! Why should the in - no - cent fear?  
Ah! that the but - ter - fly's gild - ed wing flut - tered in e - ver - green bowers!

Lend - ing a charm to ev - 'ry ray That falls on her cheeks of light,  
Spread - ing their pe - tals in mute de - light When morn in its ra - diance breaks,  
Sad is my heart for the blight - ed plants Its plea - sures are eye as brief They

*Fine*

"Ah! May the Red Rose Live Always!"

-2-

21 *ad. lib.*

Gi - ving - the ze - phyr kiss for kiss, And nur - sing the dew - drop bright.  
Keep - ing a flo - ral fes - ti - val Till the night lov - ing prim - rose wakes.  
bloom at the young year's joy - ful call, And fade with the au - tumn leaf:

25

Ah! may the red rose live al - way, To smile up - on earth and sky!  
Long may the dai - sies dance the field, Fro - lick - ing far and near!  
Lulled be the dirge in the cy - press bough, That tells of de - part - ed flowers!

29

Why should the beau - ti - ful e - ver weep? Why should the beau - ti - ful die?  
Why should the in - no - cent hide their heads! Why should the in - no - cent fear?  
Ah! that the but - ter - fly's gild - ed wing flut - tered in e - ver - green bowers!

33

*i m* *m i*

# "AH! MAY THE RED ROSE LIVE ALWAYS!"

guitar accompaniment  
by W. F. Long

Stephen C. Foster

VOICE *Not too fast* *Fine* **G**

Ah! Long Lulled may the red rose  
may the dai - sies  
be the dirge in the

live al - way, To smile up - on earth and sky!  
dance the field, That Fro - lick - ing far and near!  
cy - press bough, tells of de - part - ed flowers!

Why should the beau - ti - ful e - ver weep? Why should the beau - ti - ful  
Why should the in - no - cent hide their heads! Why should the in - no - cent  
Ah! that the but - ter - fly's gild - ed wing flut - tered in e - ver - green

die? Lend - ing a charm to ev - 'ry ray That  
fear? Spread - ing their pe - tals in mute de - light When  
bowers! Sad is my heart for the blight - ed plants Its

falls on her cheeks of light, Gi - ving - the ze - phyr  
morn in its ra - diace breaks, Keep - ing a flo - ral  
pleas - ures are aye as brief They bloom at the young year's

kiss for kiss, And nur - sing the dew - drop bright  
fes - ti - val Till the night - lov - ing prim - rose wakes  
joy - ful call, And fade with the au - tumn leaf:

Ah! Long Lulled may the red rose live al - way, To  
may the dai - sies in the dance the field, bough, That  
cy - press

smile up - on earth and sky! Why should the beau - ti - ful  
Fro - lick - ing far and near! Why should the in - no - cent  
tells of de - part - ed flowers! Ah! that the but - ter - fly's

e - ver weep? Why should the beau - ti - ful die?  
hide their heads! Why should the in - no - cent fear?  
gild - ed wing flut - tered in e - ver - green bowers!

# "AH! MAY THE RED ROSE LIVE ALWAYS!"

guitar accompaniment  
by W. F. Long

Stephen C. Foster

Not too fast

GUITAR

3rd pos. ③

5th pos.

Fine

33

Detailed description: This is a guitar sheet music score for the piece "Ah! May the Red Rose Live Always!" by Stephen C. Foster, arranged by W. F. Long. The music is written for guitar in the key of D major (one sharp) and 6/8 time. It consists of nine staves of music. The first staff begins with the tempo marking "Not too fast" and includes fingering (m, i, m) and dynamics (p) for the first few notes. A circled "3" indicates a triplet. The second staff starts at measure 5 and includes a "5th pos." marking. The word "Fine" appears at the end of the second staff. The remaining staves (3-9) continue the accompaniment with various chord voicings and melodic lines. The final staff starts at measure 33 and includes fingering (i, m) and dynamics (m, i) for the concluding notes.

# "AH! MAY THE RED ROSE LIVE ALWAYS!"

guitar and flute accompaniment  
by W. F. Long

Stephen C. Foster

*Not too fast*

FLUTE

GUITAR

FL.

GTR.

9

Ah! may the red rose live al - way, To smile up - on earth and sky!  
 Long Lulled may the dai - sies dance the field, Fro - lick - ing far and near!  
 Lulled be the dirge in the cy - press bough, That tells of de - part - ed flowers!

13

Why should the beau - ti - ful e - ver weep? Why should the beau - ti - ful die?  
 Why should the in - no - cent hide their heads! Why should the in - no - cent fear?  
 Ah! that the but - ter - fly's gild - ed wing flut - tered in e - ver - green bowers!

17

FL.

GTR.

Lend - ing a charm to ev - 'ry ray That falls on her cheeks of light,  
 Spread - ing their pe - tals in mute de - light When morn in its ra - diance breaks,  
 Sad is my heart for the blight - ed plants Its plea - sures are aye as brief They

*Fine*

*Fine*



"Ah! May the Red Rose Live Alway!"

-2-

FL.    

GTR.    

21 *ad. lib.*  
Gi - ving - the ze - phyr kiss for kiss, And nur - sing the dew - drop bright.  
Keep - ing a flo - ral fes - ti - val Till the night lov - ing prim - rose wakes.  
bloom at the young year's joy - ful call, And fade with the au - tumn leaf:

25  
Ah! may the red rose live al - way, To smile up - on earth and sky!  
Long may the dai - sies dance the field, Fro-lick-ing far and near!  
Lulled be the dirge in the cy - press bough, That tells of de - part - ed flowers!

29  
Why should the beau - ti - ful e - ver weep? Why should the beau - ti - ful die?  
Why should the in - no - cent hide their heads! Why should the in - no - cent fear?  
Ah! that the but - ter - fly's gild - ed wing flut - tered in e - ver - green bowers!

33 

# "AH! MAY THE RED ROSE LIVE ALWAY!"

guitar and flute accompaniment  
by W. F. Long  
*Not too fast*

Stephen C. Foster

GUITAR

GTR.

GTR.

GTR.

GTR.

GTR.

FLUTE or  
ALTO RECORDER

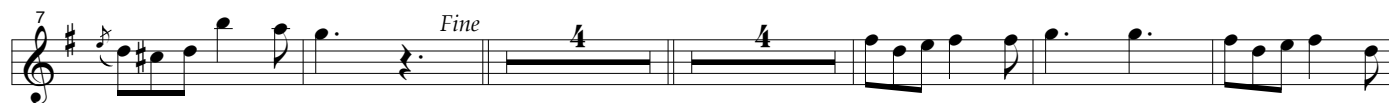
# "AH! MAY THE RED ROSE LIVE ALWAYS!"

guitar and flute accompaniment  
by W. F. Long

Stephen C. Foster

*Not too fast*

8va-----



# "AH! MAY THE RED ROSE LIVE ALWAYS!"

guitar and clarinet accompaniment  
by W. F. Long

Stephen C. Foster

*Not too fast*

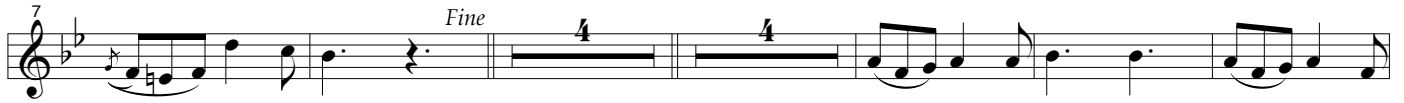


# "AH! MAY THE RED ROSE LIVE ALWAYS!"

guitar and clarinet accompaniment  
by W. F. Long

Stephen C. Foster

*Not too fast*



# "AH! MAY THE RED ROSE LIVE ALWAYS!"

guitar and violin accompaniment  
by W. F. Long

Stephen C. Foster

*Not too fast*

VIOLIN

VN.

VN.

VN.